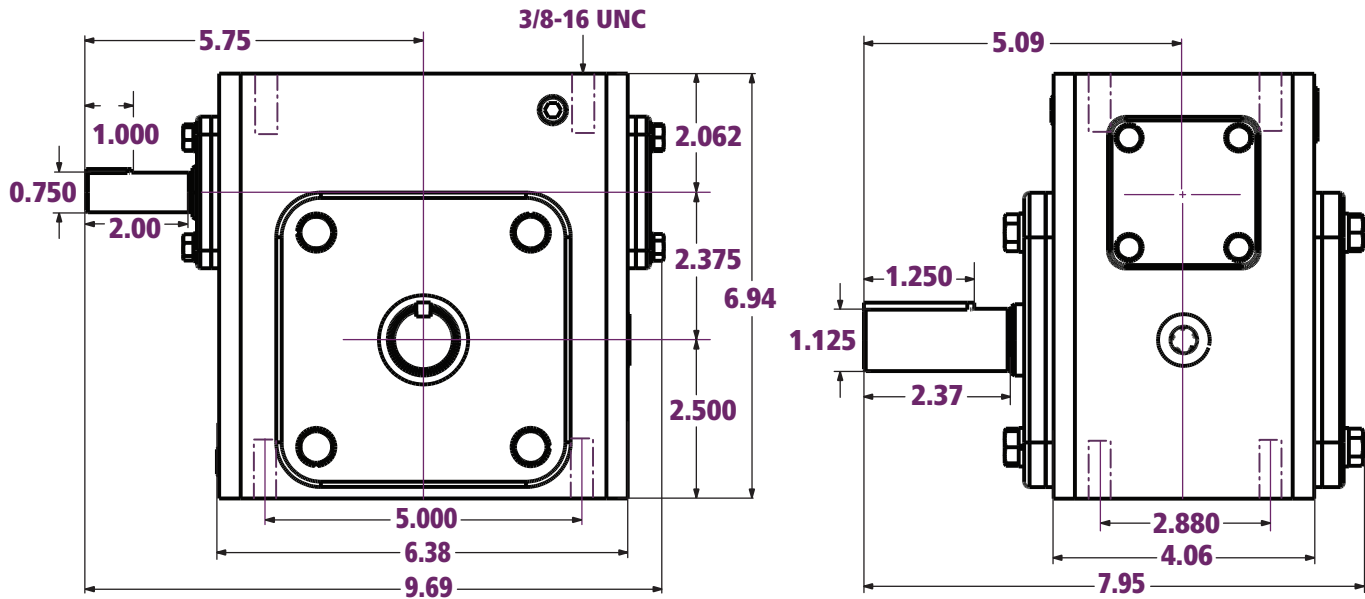




XS237 Dimensions

All dimensions listed in inches



Output and Input Shafts (in)

Output Keyway (in)	Output Shaft Dia. (in)	Input Keyway (in)	Input Shaft Dia. (in)
1/4 x 1/8	1.125	3/16 x 3/32	0.750

Specifications

Center Distance (in)	Weight (lbs)	Est. Oil Fill Amount* (oz)
2.375	36.3 [37.4 [†]]	22.0

*For Position 1.

[†]Approximate weight for LR Handling.

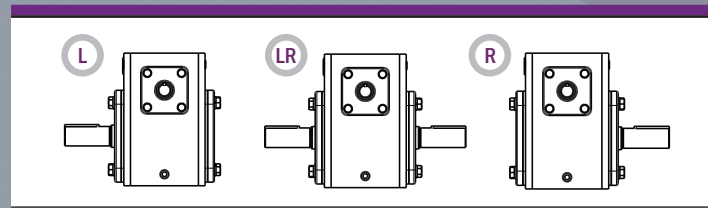
Ratios

Nominal Ratios	Exact Ratios
5:1	5.3:1
10:1	10.3:1
15:1	15.5:1
20:1	19.5:1
30:1	30.0:1
40:1	40.0:1
50:1	50.0:1
60:1	60.0:1

Efficiency

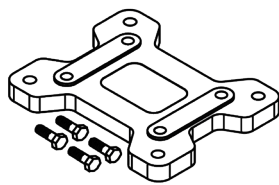
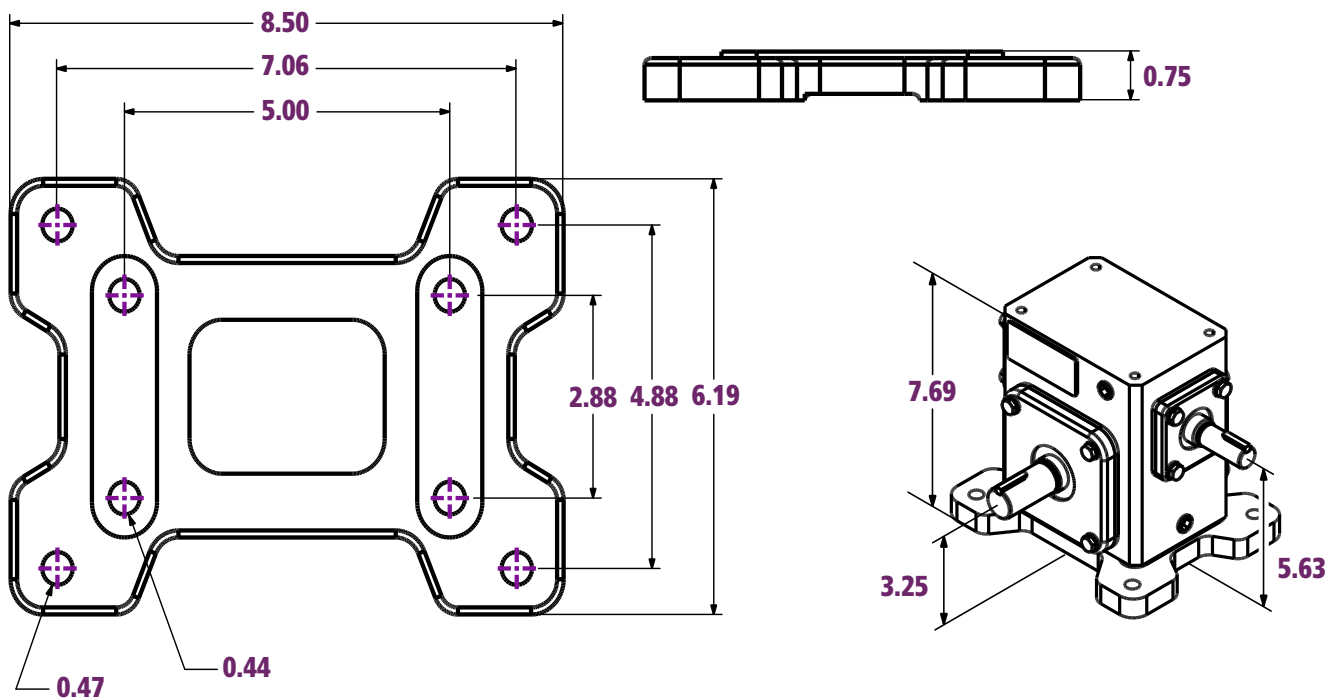
Nominal Ratios	Efficiency (%)
5:1	≈ 93
10:1	≈ 89
15:1	≈ 84
20:1	≈ 82
30:1	≈ 76
40:1	≈ 71
50:1	≈ 64
60:1	≈ 61

Handling Types



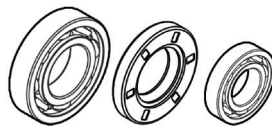
XS237 Accessories

and X237 Base Kit Dimensions



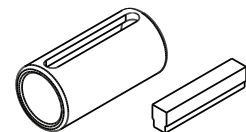
Foot Mounted Base Kit

XBK237



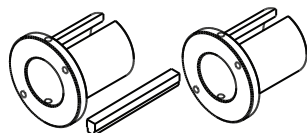
Component Repair Kit

XSRK237



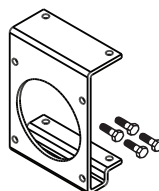
Input Quill Adapter Option

Not Applicable



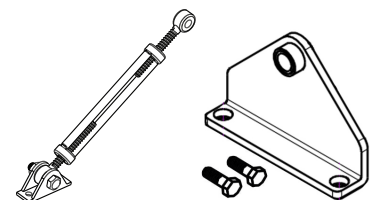
Output Bushing Kits*

Not Applicable



Output Bracket Kit*

XOB237



Torque Arm Kit*

XTA237

*Made to order.